

# Kid Padre Sweater

Designed by Nancy Nelson

Skill level: *Intermediate*

**To Fit Size:**

7-8 year old

**Gauge:**

Using size 7 (4.5mm) needle  
4.7sts = 1" and 6.3 rws = 1"

**Finished Sweater Size:**

Chest: 29.5"  
Length: 18.5"  
Sleeve Lgth: 14"

Save time check your gauge

**Materials:**

MC 6 balls Plymouth Tweed- 5302 Cream; 50gm; 109yds each  
CC 1 ball Plymouth Tweed- 5317 Blue  
7 (4.5mm) and 5 (3.75mm) needle , Tapestry needle, stitch holders.

**Abbreviations**

<b>Beg</b> beginning	<b>MC</b> main color	<b>RS</b> right side
<b>CC</b> contrast color	<b>mm</b> millimeters	<b>rnd</b> round
<b>cont</b> continue	<b>NR</b> next row	<b>st(s)</b> stitch(es)
<b>dec</b> decrease(ing)	<b>p</b> purl	<b>ssk</b> slip, slip, knit
<b>fol</b> following	<b>pat</b> pattern	<b>tog</b> together
<b>fols</b> follows	<b>rem</b> remain(ing)	<b>yfwd</b> yarn forward
<b>in(s)</b> inch(es)	<b>rep</b> repeat	<b>yo</b> yarn over
<b>inc</b> increase(ing)	<b>RSF/WSF</b> right/ wrong side facing	<b>wk</b> work
<b>k</b> knit		<b>WS</b> wrong side

**Back**

With size 5 needles cast on 70sts and work 8 rows in K2, P2 rib. Change to size 7 needle, work 106 rows in Stockinette stitch, or 17". Piece will measure 18.5" from Cast on. Divide sts 21, 28, 21 on three separate holders.

**Front**

Work as back until row 55 of stockinette stitch. Beg chart on row 56, aligning center of motif with center of row. Work motif in Intarsia method. Once motif is finished, cont. with MC in Stockinette stitch until row 91. At row 91(RS row) k 29, place next 12 sts on a holder. Left Shoulder: Turn, cast off 3 sts, purl to end. Knit next row, and all RS rows. Cast off 2 sts, purl to end. Work RS row. P1, p2tog (purl 2 together) purl to end of row. Repeat last 2 rows two more times. Work 6 more rows, leave remaining 21 stitches on a holder.

Right Shoulder: Return to remaining 29 sts on needle, with new ball of yarn begin at neck edge (RS), cast off 3 sts, knit to end. Purl next row, and all WS rows. Cast off 2 sts, knit to end. Work WS row. Next right side row, k1, ssk, knit to end of row. Repeat last 2 rows two more times. Work 6 more rows, leave remaining 21 stitches on a holder.

**Sleeve** (make two)

With size 5 needles cast on 40sts and work 6 rows in K2, P2 rib. Change to size 7 needle, work 4 rows in stockinette st. Next row, k1, inc 1 st knit to last stitch, inc 1 st, k1. Continue increasing in this manner every 6th row, 12 times = (64 sts). Work 4 rows more, piece will measure 14.2" from Cast on edge. Cast off loosley.

**Neck Band**

Join right shoulder seam using the three needle bind off method. Using size 5 needle and MC yarn, with RS facing start at left front neck edge, pick up and knit 13 sts, k across the 12 sts on the holder, pick up and knit 13 sts on right side of neck, knit across the center 28 sts on back holder = 66sts.. Turn and with CC yarn purl one row. Next row p1, (k2, p2) repeat to last st, p1. Next row with MC yarn k1, (p2, k2) repeat to last st, k1. Continuing with MC yarn, repeat last 2 rows 2 more times, total of 6 rows. Start on WS row, purl next row. Knit next row. Repeat last two rows once more. Cast off all stitches loosley as follows; Using the tail attached to the neck stitches, cut a tail that is at least three times the length of the neck edge. Thread a tapestry needle, enter the first two stitches as to purl, pull yarn through. Enter the first stitch as to knit, take off knitting ndl and pull through, being sure not to pull too tightly. Repeat these last two steps until all stitches are off the ndl.

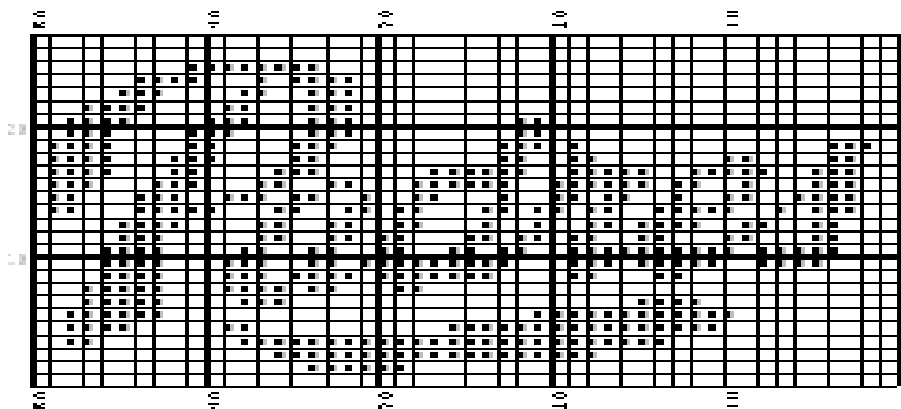
Join left shoulder seam using the three needle bind off method, sew neck band with mattress st.

**Make up**

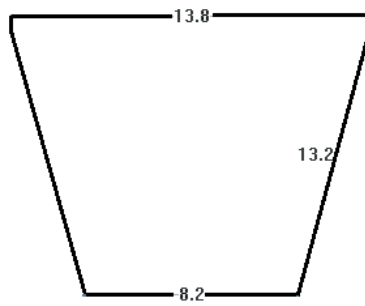
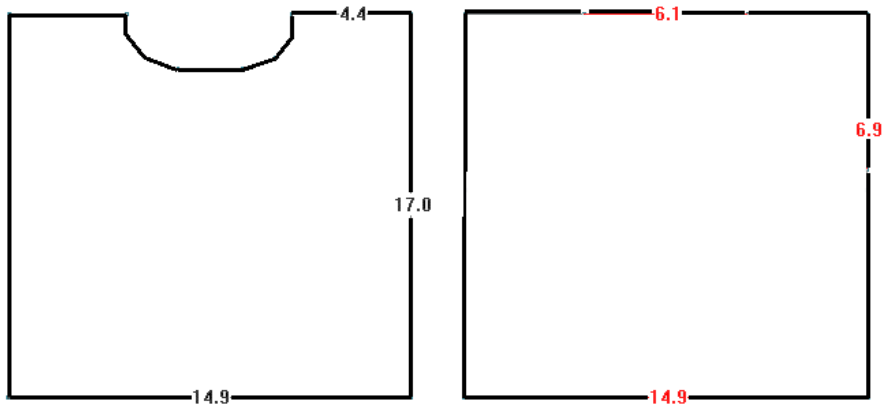
Sew in sleeves thus: pin center point of sleeve cast off edge to shoulder seam and stitch to body working from underarm to shoulder. Sew up sweater side and sleeve seams at once. Bury all loose threads.

**Aftercare**

See ball band for washing instructions. Pat garment into original shape and size. Dry flat away from direct heat and sunlight.



Common Threads  
www.knittingclub.com



All rights reserved by Common Threads.  
Reproduction of publication is protected by copyright.

Queries contact:  
Common Threads 466 S. Coast Hwy. 101  
Encinitas, CA. 92024  
Tel: 760-436-6119 Fax: 760-436-6552  
e-mail: [commonthreads@fiberartshop.com](mailto:commonthreads@fiberartshop.com)  
web: [www.knittingclub.com](http://www.knittingclub.com)



Designed by Nancy Nelson

Skill level: Intermediate  
Featured Yarn:  
Worsted Weight yarn